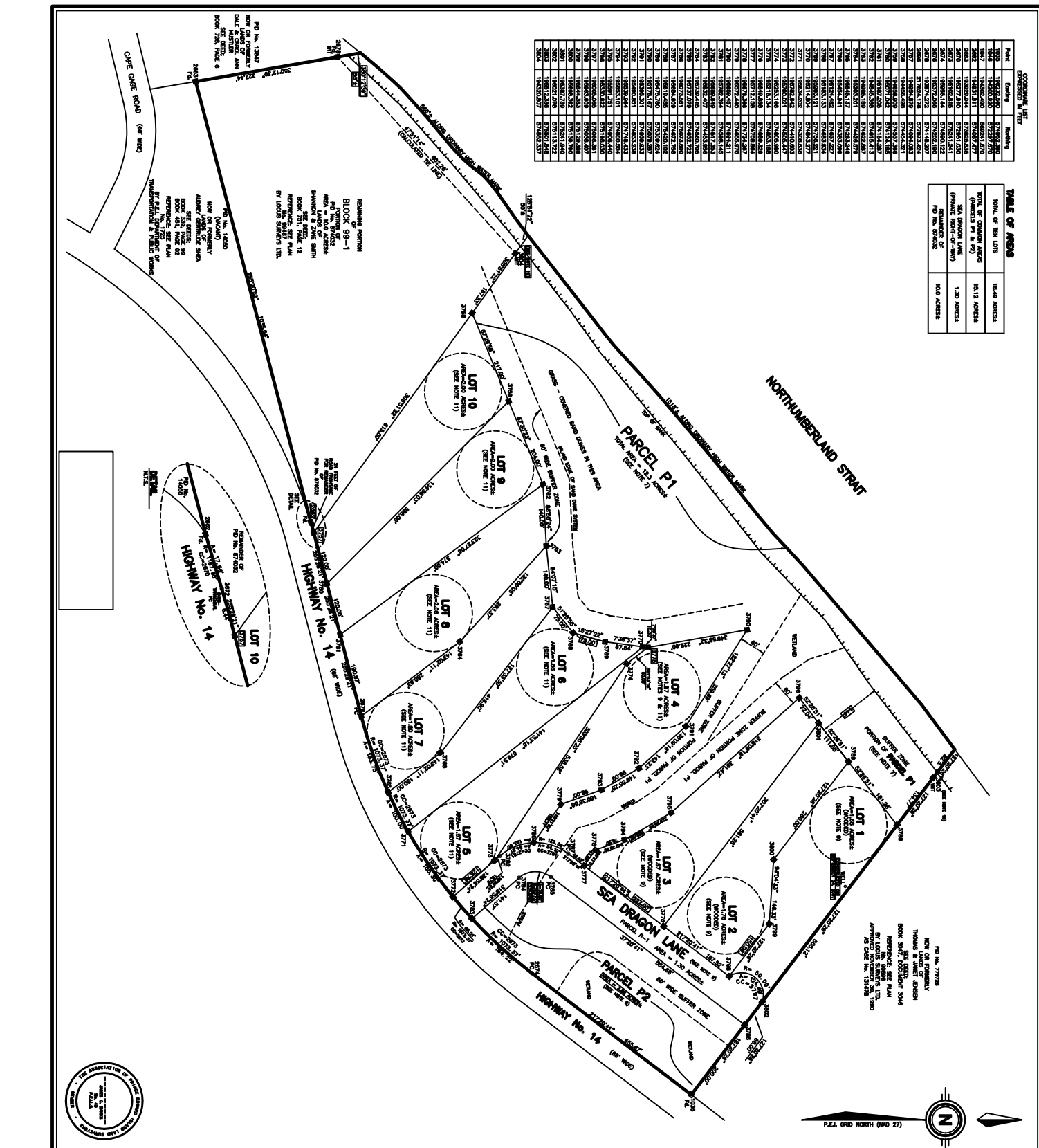


COMPONENT LIST

Point	Easting	Northing
1030	180323.820	574502.520
1031	180323.820	574502.520
1032	180323.820	574502.520
1033	180323.820	574502.520
1034	180323.820	574502.520
1035	180323.820	574502.520
1036	180323.820	574502.520
1037	180323.820	574502.520
1038	180323.820	574502.520
1039	180323.820	574502.520
1040	180323.820	574502.520
1041	180323.820	574502.520
1042	180323.820	574502.520
1043	180323.820	574502.520
1044	180323.820	574502.520
1045	180323.820	574502.520
1046	180323.820	574502.520
1047	180323.820	574502.520
1048	180323.820	574502.520
1049	180323.820	574502.520
1050	180323.820	574502.520
1051	180323.820	574502.520
1052	180323.820	574502.520
1053	180323.820	574502.520
1054	180323.820	574502.520
1055	180323.820	574502.520
1056	180323.820	574502.520
1057	180323.820	574502.520
1058	180323.820	574502.520
1059	180323.820	574502.520
1060	180323.820	574502.520
1061	180323.820	574502.520
1062	180323.820	574502.520
1063	180323.820	574502.520
1064	180323.820	574502.520
1065	180323.820	574502.520
1066	180323.820	574502.520
1067	180323.820	574502.520
1068	180323.820	574502.520
1069	180323.820	574502.520
1070	180323.820	574502.520
1071	180323.820	574502.520
1072	180323.820	574502.520
1073	180323.820	574502.520
1074	180323.820	574502.520
1075	180323.820	574502.520
1076	180323.820	574502.520
1077	180323.820	574502.520
1078	180323.820	574502.520
1079	180323.820	574502.520
1080	180323.820	574502.520
1081	180323.820	574502.520
1082	180323.820	574502.520
1083	180323.820	574502.520
1084	180323.820	574502.520
1085	180323.820	574502.520
1086	180323.820	574502.520
1087	180323.820	574502.520
1088	180323.820	574502.520
1089	180323.820	574502.520
1090	180323.820	574502.520
1091	180323.820	574502.520
1092	180323.820	574502.520
1093	180323.820	574502.520
1094	180323.820	574502.520
1095	180323.820	574502.520
1096	180323.820	574502.520
1097	180323.820	574502.520
1098	180323.820	574502.520
1099	180323.820	574502.520
1100	180323.820	574502.520

**TABLE OF AREAS**

TOTAL OF TEN LOTS	18.48 ACRES
TOTAL OF COMMON AREAS (OWNERS P1 & P2)	15.12 ACRES
SEA DRAGON LANE (PRIVATE RIGHT-OF-WAY)	1.20 ACRES
REMAINDER OF P1 & P2	15.00 ACRES
REMAINDER OF P1 & P2	15.00 ACRES



**REMAINING COMMON BLOCK 89-1**  
 NO. 18, 19, 20, 21, 22, 23, 24, 25, 26, 27, 28, 29, 30, 31, 32, 33, 34, 35, 36, 37, 38, 39, 40, 41, 42, 43, 44, 45, 46, 47, 48, 49, 50, 51, 52, 53, 54, 55, 56, 57, 58, 59, 60, 61, 62, 63, 64, 65, 66, 67, 68, 69, 70, 71, 72, 73, 74, 75, 76, 77, 78, 79, 80, 81, 82, 83, 84, 85, 86, 87, 88, 89, 90, 91, 92, 93, 94, 95, 96, 97, 98, 99, 100, 101, 102, 103, 104, 105, 106, 107, 108, 109, 110, 111, 112, 113, 114, 115, 116, 117, 118, 119, 120, 121, 122, 123, 124, 125, 126, 127, 128, 129, 130, 131, 132, 133, 134, 135, 136, 137, 138, 139, 140, 141, 142, 143, 144, 145, 146, 147, 148, 149, 150, 151, 152, 153, 154, 155, 156, 157, 158, 159, 160, 161, 162, 163, 164, 165, 166, 167, 168, 169, 170, 171, 172, 173, 174, 175, 176, 177, 178, 179, 180, 181, 182, 183, 184, 185, 186, 187, 188, 189, 190, 191, 192, 193, 194, 195, 196, 197, 198, 199, 200, 201, 202, 203, 204, 205, 206, 207, 208, 209, 210, 211, 212, 213, 214, 215, 216, 217, 218, 219, 220, 221, 222, 223, 224, 225, 226, 227, 228, 229, 230, 231, 232, 233, 234, 235, 236, 237, 238, 239, 240, 241, 242, 243, 244, 245, 246, 247, 248, 249, 250, 251, 252, 253, 254, 255, 256, 257, 258, 259, 260, 261, 262, 263, 264, 265, 266, 267, 268, 269, 270, 271, 272, 273, 274, 275, 276, 277, 278, 279, 280, 281, 282, 283, 284, 285, 286, 287, 288, 289, 290, 291, 292, 293, 294, 295, 296, 297, 298, 299, 300, 301, 302, 303, 304, 305, 306, 307, 308, 309, 310, 311, 312, 313, 314, 315, 316, 317, 318, 319, 320, 321, 322, 323, 324, 325, 326, 327, 328, 329, 330, 331, 332, 333, 334, 335, 336, 337, 338, 339, 340, 341, 342, 343, 344, 345, 346, 347, 348, 349, 350, 351, 352, 353, 354, 355, 356, 357, 358, 359, 360, 361, 362, 363, 364, 365, 366, 367, 368, 369, 370, 371, 372, 373, 374, 375, 376, 377, 378, 379, 380, 381, 382, 383, 384, 385, 386, 387, 388, 389, 390, 391, 392, 393, 394, 395, 396, 397, 398, 399, 400, 401, 402, 403, 404, 405, 406, 407, 408, 409, 410, 411, 412, 413, 414, 415, 416, 417, 418, 419, 420, 421, 422, 423, 424, 425, 426, 427, 428, 429, 430, 431, 432, 433, 434, 435, 436, 437, 438, 439, 440, 441, 442, 443, 444, 445, 446, 447, 448, 449, 450, 451, 452, 453, 454, 455, 456, 457, 458, 459, 460, 461, 462, 463, 464, 465, 466, 467, 468, 469, 470, 471, 472, 473, 474, 475, 476, 477, 478, 479, 480, 481, 482, 483, 484, 485, 486, 487, 488, 489, 490, 491, 492, 493, 494, 495, 496, 497, 498, 499, 500, 501, 502, 503, 504, 505, 506, 507, 508, 509, 510, 511, 512, 513, 514, 515, 516, 517, 518, 519, 520, 521, 522, 523, 524, 525, 526, 527, 528, 529, 530, 531, 532, 533, 534, 535, 536, 537, 538, 539, 540, 541, 542, 543, 544, 545, 546, 547, 548, 549, 550, 551, 552, 553, 554, 555, 556, 557, 558, 559, 560, 561, 562, 563, 564, 565, 566, 567, 568, 569, 570, 571, 572, 573, 574, 575, 576, 577, 578, 579, 580, 581, 582, 583, 584, 585, 586, 587, 588, 589, 590, 591, 592, 593, 594, 595, 596, 597, 598, 599, 600, 601, 602, 603, 604, 605, 606, 607, 608, 609, 610, 611, 612, 613, 614, 615, 616, 617, 618, 619, 620, 621, 622, 623, 624, 625, 626, 627, 628, 629, 630, 631, 632, 633, 634, 635, 636, 637, 638, 639, 640, 641, 642, 643, 644, 645, 646, 647, 648, 649, 650, 651, 652, 653, 654, 655, 656, 657, 658, 659, 660, 661, 662, 663, 664, 665, 666, 667, 668, 669, 670, 671, 672, 673, 674, 675, 676, 677, 678, 679, 680, 681, 682, 683, 684, 685, 686, 687, 688, 689, 690, 691, 692, 693, 694, 695, 696, 697, 698, 699, 700, 701, 702, 703, 704, 705, 706, 707, 708, 709, 710, 711, 712, 713, 714, 715, 716, 717, 718, 719, 720, 721, 722, 723, 724, 725, 726, 727, 728, 729, 730, 731, 732, 733, 734, 735, 736, 737, 738, 739, 740, 741, 742, 743, 744, 745, 746, 747, 748, 749, 750, 751, 752, 753, 754, 755, 756, 757, 758, 759, 760, 761, 762, 763, 764, 765, 766, 767, 768, 769, 770, 771, 772, 773, 774, 775, 776, 777, 778, 779, 780, 781, 782, 783, 784, 785, 786, 787, 788, 789, 790, 791, 792, 793, 794, 795, 796, 797, 798, 799, 800, 801, 802, 803, 804, 805, 806, 807, 808, 809, 810, 811, 812, 813, 814, 815, 816, 817, 818, 819, 820, 821, 822, 823, 824, 825, 826, 827, 828, 829, 830, 831, 832, 833, 834, 835, 836, 837, 838, 839, 840, 841, 842, 843, 844, 845, 846, 847, 848, 849, 850, 851, 852, 853, 854, 855, 856, 857, 858, 859, 860, 861, 862, 863, 864, 865, 866, 867, 868, 869, 870, 871, 872, 873, 874, 875, 876, 877, 878, 879, 880, 881, 882, 883, 884, 885, 886, 887, 888, 889, 890, 891, 892, 893, 894, 895, 896, 897, 898, 899, 900, 901, 902, 903, 904, 905, 906, 907, 908, 909, 910, 911, 912, 913, 914, 915, 916, 917, 918, 919, 920, 921, 922, 923, 924, 925, 926, 927, 928, 929, 930, 931, 932, 933, 934, 935, 936, 937, 938, 939, 940, 941, 942, 943, 944, 945, 946, 947, 948, 949, 950, 951, 952, 953, 954, 955, 956, 957, 958, 959, 960, 961, 962, 963, 964, 965, 966, 967, 968, 969, 970, 971, 972, 973, 974, 975, 976, 977, 978, 979, 980, 981, 982, 983, 984, 985, 986, 987, 988, 989, 990, 991, 992, 993, 994, 995, 996, 997, 998, 999, 1000.

**PLAN OF SURVEY SHOWING LOTS 1 TO 10 INCLUSIVE BEING A SUBDIVISION OF LANDS OF SHANNON & ZANE SMITH; ALSO SHOWING PARCELS R-1, P1 & P2**

**SCALE 1" = 100'**

**LEGEND**

**KEY PLAN**

**NOTES**

1. THE FIELD WORK FOR THIS SURVEY WAS COMPLETED DURING NOVEMBER, 2007.
2. FIELD MEASUREMENTS HAVE BEEN ADJUSTED BY THE COMMON RULE AND BUCKLE FACTOR HAS NOT BEEN APPLIED.
3. ALL DIMENSIONS ARE GIVEN IN FEET.
4. ALL DIMENSIONS ARE GIVEN IN FEET.
5. ALL DIMENSIONS ARE GIVEN IN FEET.
6. THE TOTAL AREA OF PARCEL P1 IS 15.12 ACRES, WHICH IS THE SAME AS THE TOTAL AREA OF PARCEL P2.
7. PARCEL P1 IS BOUND BY SEA DRAGON LANE TO THE NORTH, HIGHWAY NO. 14 TO THE SOUTH, AND THE COMMON AREAS TO THE WEST AND EAST.
8. PARCEL P2 IS BOUND BY SEA DRAGON LANE TO THE NORTH, HIGHWAY NO. 14 TO THE SOUTH, AND THE COMMON AREAS TO THE WEST AND EAST.
9. LOTS 1, 2, 3, 4, 5, 6, 7, 8, 9, AND 10 ARE BOUND BY SEA DRAGON LANE TO THE NORTH, HIGHWAY NO. 14 TO THE SOUTH, AND THE COMMON AREAS TO THE WEST AND EAST.
10. THE CALCULATED AREA FROM THE COMMON AREAS IS 15.12 ACRES.
11. THE CALCULATED AREA FROM THE COMMON AREAS IS 15.12 ACRES.

**LOCUS SURVEYS LTD.**  
 LOCUS SURVEYS LTD.  
 1000 ROUTE 108  
 ST. JOHN'S, P.E.I.  
 S1A 1A1  
 TEL: (902) 754-1111  
 FAX: (902) 754-1112  
 WWW.LOCUSSURVEYS.COM

**REGISTERED**  
 FRANCIS COUNTY  
 DRAWING NO. 07041  
 SHEET NO. 211 OF 204  
 DRAWING NO. 07041

**LOT 2**  
 P.E.I.  
 DRAWING NO. 07041

**1. JAMES C. HARRIS, FRANCIS EDWARD ISLAND SURVEYOR, DO HEREBY CERTIFY THAT THIS SURVEY WAS CONDUCTED IN ACCORDANCE WITH THE SURVEY ACT AND THE REGULATIONS THEREUNDER AND THAT THIS REPRESENTATION OF SAID SURVEY IS TRUE AND CORRECT.**

**REGISTERED**  
 FRANCIS COUNTY  
 DRAWING NO. 07041  
 SHEET NO. 211 OF 204  
 DRAWING NO. 07041

**JAMES C. HARRIS, P.E.I. SURVEYOR**  
 REGISTERED 21, 2007  
 DATE